



Unmasking *Celiac Disease* and empowering health

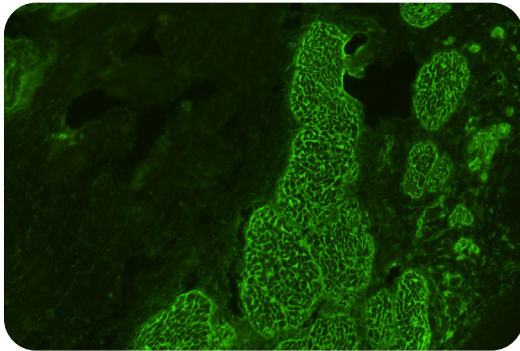
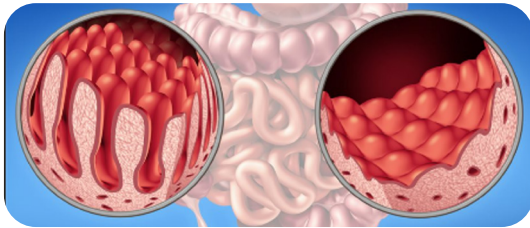
Improving the diagnostic journey with a
comprehensive solution of specific markers

sebia 

The new language of life

Key features

Celiac disease



Definition: Celiac disease is an autoimmune reaction of the small intestine which is hypersensitive to gluten (gliadin peptides from wheat, rye, barley).

Pathology: The intestinal villi of the small intestine die leading to malabsorption/malnutrition.

Treatment: Lifelong elimination of gluten from diet.

Diagnosis: Diagnosis of celiac disease typically involves a combination of clinical evaluation, serological tests and histological examination.

The European Society for Paediatric Gastroenterology, Hepatology and Nutrition (ESPGHAN) 2020 guidelines recommends using the following diagnostic markers:

- Test for total IgA
- **Anti-tTG IgA - Anti-Tissue-Transglutaminase IgA** available on Alegria 2 and ELISA platform
- **Anti-tTG IgG - Anti-Tissue-Transglutaminase IgG** available on Alegria 2 and ELISA platform
- **Anti-DGP IgG - Anti-DGP (Deamidate Gliadin Peptide) IgG** available on Alegria 2 and ELISA platform
- **EMA IgA** - Anti-Endomysium available on dIFine systems

Sebia offers additional markers:

- **Anti-DGP IgA** available on Alegria 2 and ELISA platform
- **Anti-DGP Screen** available on Alegria 2
- **Gliadin IgA, Gliadin IgG** available on Alegria 2 and ELISA platform

Main benefits

Use ESPGHAN recommended diagnostic markers

1 Recommended non-invasive serological assays

2 Wide measuring range



Anti-Tissue Transglutaminase (tTG) IgA is the most efficient serological test for the diagnosis of celiac disease. Anti-tTG IgA levels correlate with the degree of intestinal damage and values can fluctuate with disease activity. Anti-tTG tests can be used to support diagnosis in symptomatic individuals, to screen at-risk populations or to monitor diet compliance in patients previously diagnosed with celiac disease.

Antibodies directed against **Deamidated Gliadin Protein epitopes (DGP)** are excellent markers for serological diagnosis of celiac disease. They bind to epitopes of deamidated gliadin fragments that are relevant for celiac disease pathogenesis. DGPs are formed by the action of tissue transglutaminase on native dietary gliadin.

Anti-endomysium antibodies (anti-EMA) are highly specific autoantibodies directed against endomysial connective tissue, primarily recognizing tissue transglutaminase. They are detected by indirect immunofluorescence assays (IFA), showing very high diagnostic specificity, and are widely used to support the diagnosis of celiac disease.

Key features

from sample-to-answer in one combined workflow

Full patient profile with the flexibility of **Alegria 2** Monotest technology

Automated and standardized workflow with **dIFine® P30 processor** for IFA slides preparation

Scan here to access the
**ESPGHAN diagnostic
algorithm!**



Use ESPGHAN recommended diagnostic markers

- Complete offer of the recommended serological assays for a reliable screening approach including different markers

Proven medical value

3
Easy results interpretation: aid in diagnosis, and therapy monitoring

4
Reliable, simplified, and random access workflow

- Increased sensitivity
- Affordable screening approach
- Correlation with disease activity
- Reliable results to guide the therapy

Ordering information

Reagents

Alegria Monotest random access solutions, and easy-to-read IFA product to aid in the diagnosis of Celiac disease

- Anti-DGP IgA **ORG 251A**
- Anti-DGP IgG **ORG 251G**
- Anti-DGP Screen* **ORG 251S**
- Anti-Gliadin IgA **ORG 234A**
- Anti-Gliadin IgG **ORG 234G**
- Anti-Tissue-Transglutaminase IgA **ORG 240A**
- Anti-Tissue-Transglutaminase IgG **ORG 240G**
- Anti-Tissue-Transglutaminase Screen **ORG 240S**
- Endomysium (Primate oesophagus) **5396EL**

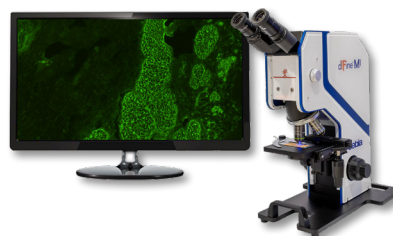
* Product not available in ELISA

External Quality Controls

- Alegria - Check Celiac A **ORG 170-2x05**
Validated for ORG 240A
- Alegria - Check Celiac G **ORG 169-2x05**
Validated for ORG 240G

Instruments

- Alegria 2 **ORG 320**
- dIFine® Automated Microscope ... **FA08IMG**
- dIFine® MI Manual Microscope
(with camera) **FA01C**
- dIFine® P30 Processor **FA30SP**



Scan here
for more information
about Celiac Disease

For further information, please find your Sebia local representative to contact on our Website
www.sebia.com/sebia/worldwide-presence/.



Sebia | RCS Evry 672 041 902 | Parc technologique Léonard de Vinci | 27, rue Léonard de Vinci | CP 8010 Lisses | 91008 Evry cedex | France | Tel.: +33 1 69 89 80 80 | E-mail: sebia@sebia.com | www.sebia.com

©Sebia2026 | **ORGENTEC Diagnostika GmbH** - Carl-Zeiss-Straße 49-51 | 55129 Mainz | Germany | **ZEUS Scientific, LLC** - 200 Evans Way | Branchburg, NJ 08876 | United States
Visia Lab Srl - Via Martiri della Libertà 95/d | 52027 San Giovanni Valdarno | Italy | **Biosynex/Theradiag** - 14 rue Ambroise Croizat | Croissy Beaubourg 77183 | France | Ref.: QM211807 - CDBIEN - 03/2026 - Non-contractual illustration - ORGENTEC, ZEUS Scientific and Biosynex/Theradiag reserve the right to modify at any time and without notice the information contained in this document intended for healthcare professionals. This document contains information intended for wide distribution and may therefore contain product details or information that is not available or valid in your country. Carefully read the instructions in the reagent package inserts and instrument manuals.