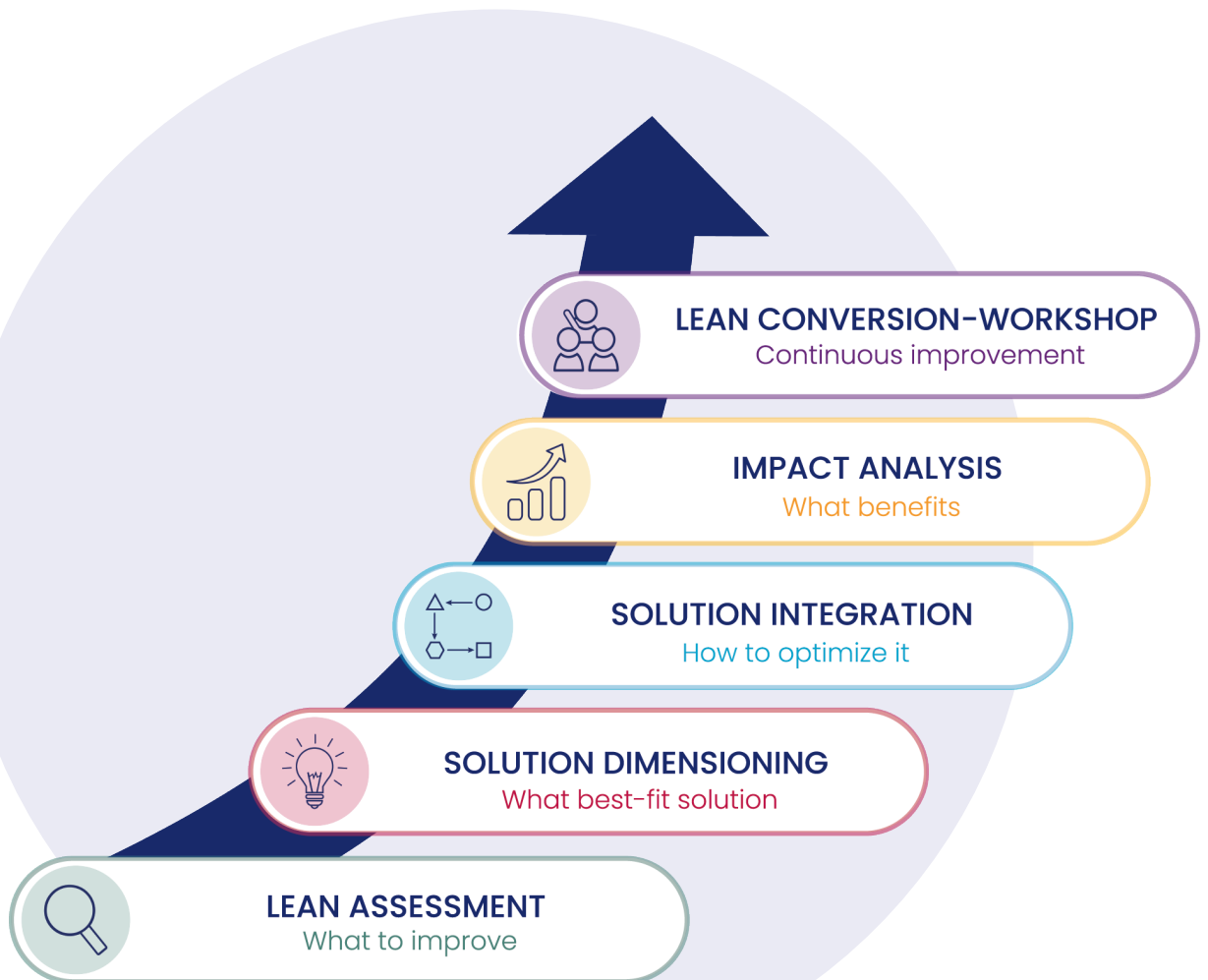


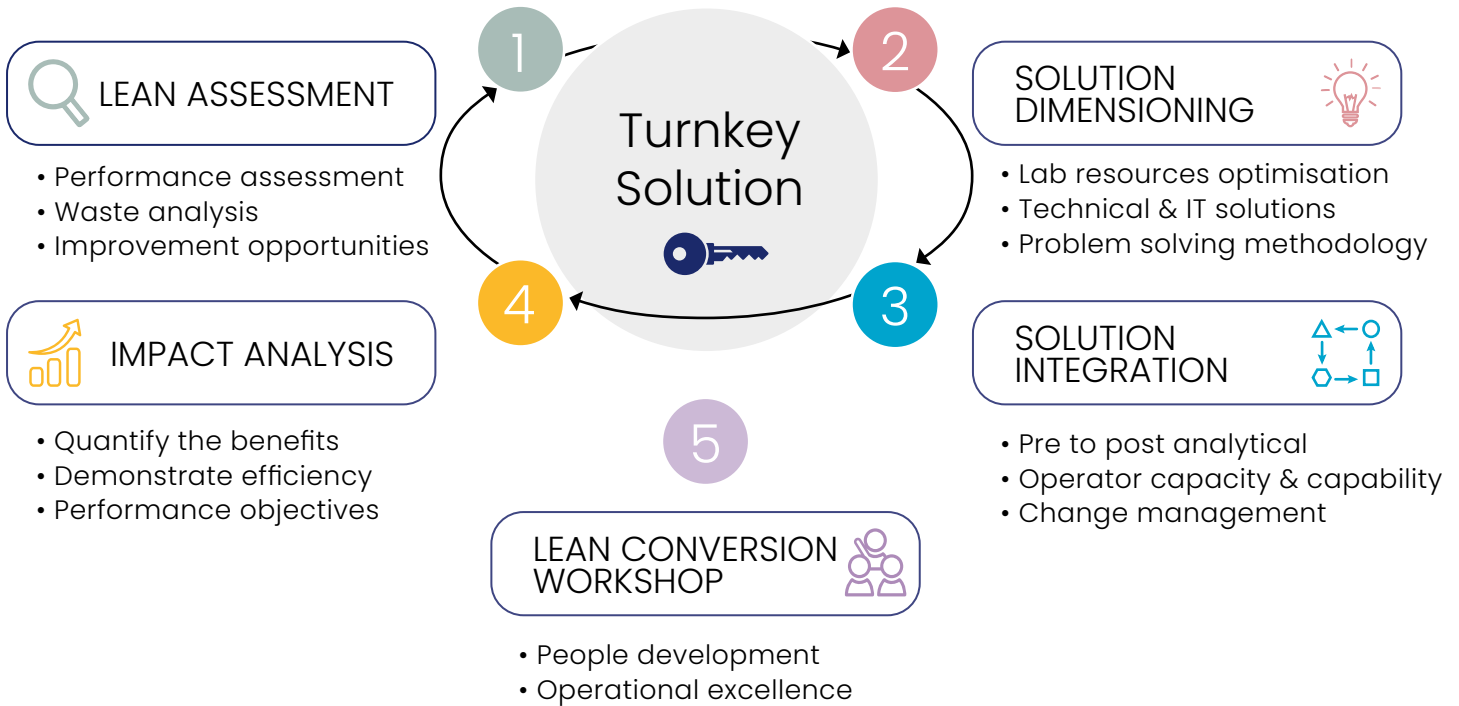
Sebia

Lean Service

for *operational efficiency*



Lean Service package benefits



Comprehensive Lean Service package

	1 LEAN ASSESSMENT	2 SOLUTION DIMENSIONING	3 SOLUTION INTEGRATION	4 IMPACT ANALYSIS
Workflow mapping	●	●	●	●
Lay out	●	●	●	●
Visual workflow	●	●	●	●
Throughput - Capacity	●	●	●	●
Lead Time	●	●	●	●
Flow analysis	●	●	●	●
Hands-on Time		●	●	●
Motion			●	●

Note: 'FUTURE STATE' labels are present in the original image, indicating that steps 2, 3, and 4 are future-oriented.



Example of deliverable: Lay out



Example of deliverable: Visual Workflow

Choose your own audit execution plan...

	1 LEAN ASSESSMENT	2 SOLUTION DIMENSIONING	3 SOLUTION INTEGRATION	4 IMPACT ANALYSIS
SCOPE	1 Analysis and / or 1 platform			
REQUIREMENTS	• Customer to provide			
	Activity volume	Activity volume	Activity volume	Activity volume
	TAT	Sample arrival pattern	Sample arrival pattern	Sample arrival pattern
	• Manager interview			
	• Operator interview			
AGENDA	1. Management & Operator interview			
	0,5 day	0,5 day	0,5 day	0,5 day
	2. Observations			
	0,5 day	0,5 day	1,5 day	1,5 day
	3. Data analysis			
	1 day	1,5 day	2 days	3 days
	4. Report out			
	0,2 day	0,2 day	0,25 day	0,25 day
	TOTAL : 2 DAYS	TOTAL : 2,5 DAYS	TOTAL : 4 DAYS	TOTAL : 5 DAYS

...and go further with continuous improvement

	LEAN CONVERSION WORKSHOP
SCOPE	Logistics, Pre to Post analytical processes, QA, Workflow, Work organisation, Technical & IT solutions
METHODOLOGIES	<ul style="list-style-type: none"> • Continuous improvement • Complex problem solving • Train the Managers & Operators
REQUIREMENTS	<ul style="list-style-type: none"> • 0,5 to 4 Days • 1 – 3 SMEs
EVENT AGENDA	<p>Meeting preparation</p> <ul style="list-style-type: none"> • Define the goals • Select the team and Set up the agenda <p>Execution</p> <ul style="list-style-type: none"> • Short kick off meeting • Training on the methodologies and Tools • Define a change plan • Set up KPIs <p>Follow up</p> <ul style="list-style-type: none"> • KPIs review and corrective actions

COMMON LEAN MANAGEMENT TOOL

D

- Define
Set goals and objectives

M

- Measure
Collect the data

A

- Analyse
Analyse the data

I

- Innovate
Identify the solutions & implement change

C

- Control
Key Performance Indicator review

OUR GLOBAL LEAN SERVICE TEAM CLOSE TO YOU



"We believe that each customer is unique. This is why our Experts are committed to deliver customized solutions"

Nasdine ZENNAF
Global Lab Optimisation Expert - Lean Black Belt



Lean Black Belt



Lab Consultant



Certified Lean Auditor

For further information, please find your Sebia local representative to contact on our Website www.sebia.com/sebia/worldwide-presence/.

Sebia | RCS Evry 672 041 902 | Parc technologique Léonard de Vinci | 27, rue Léonard de Vinci | CP 8010 Lisses | 91008 Evry cedex | France | Tel.: +33 1 69 89 80 80 | E-mail: sebia@sebia.com | www.sebia.com

©2026 **Sebia** - RCS Evry 672 041 902 | Parc technologique Léonard de Vinci | 27, rue Léonard de Vinci | CP 8010 Lisses | 91008 Evry cedex | France - Ref: LMBIEN - 08/2021
Non-contractual illustration - Sebia reserves the right to modify at any time and without notice the information contained in this document intended for healthcare professionals. This document contains information intended for wide distribution and may therefore contain product details or information that is not available or valid in your country. Carefully read the instructions in the reagent package inserts and instrument manuals.